



# Oracle P3CM Platform

Oracle Global Partner Award Winner  
Construction & Engineering  
Industry Solutions



ORACLE PRIMAVERA SPECIALISTS  
RPC . UK . COM



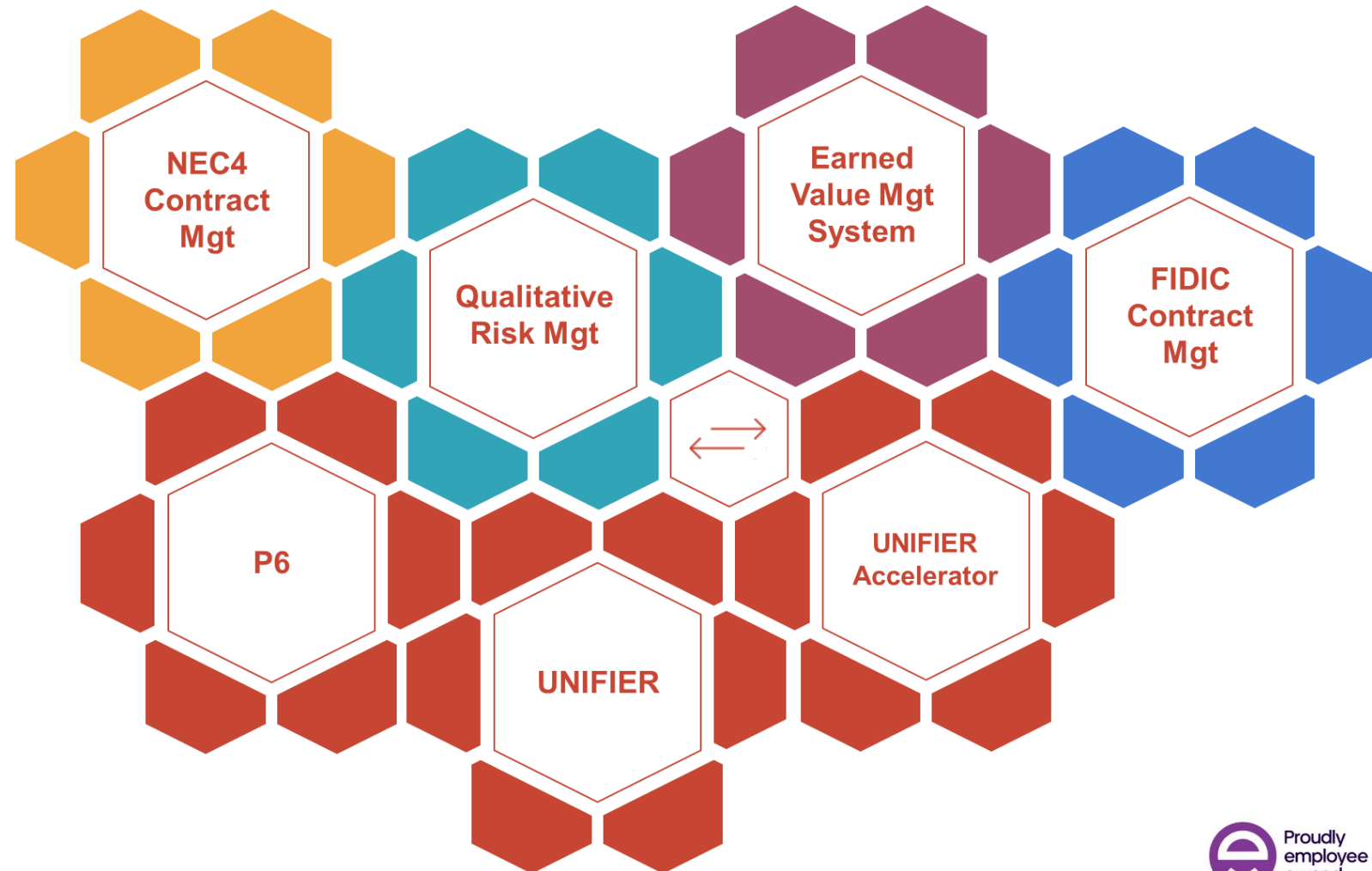
# Oracle Portfolio, Programme, Project and Contract Management Platform

Our Unifier solutions build on the base configuration of the Unifier Accelerator, with its 58 built-in business processes for project controls.

- NEC4 Contract Management
- FIDIC Contract Management
- Earned Value Management
- Qualitative Risk Management

Each can be deployed individually alongside the Accelerator, or in any number of combinations to create a powerful project controls platform for Portfolio, Programme, Project and Contract Management.

We call this our P3CM Solution.



# How does the Oracle SAAS environment help users?

## → Easy Access

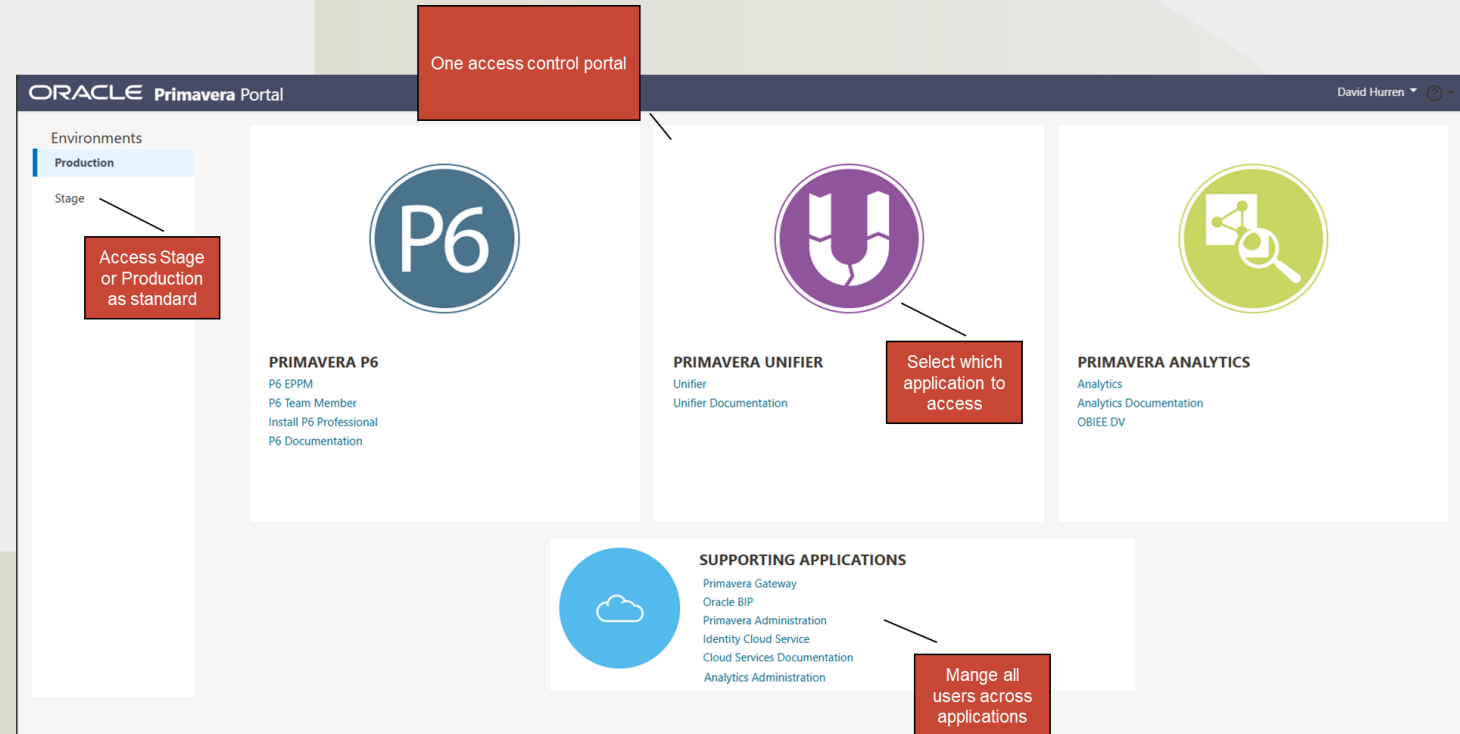
One access control portal for all applications

## → Integration

Native integration within the Oracle Primavera toolset plus bespoke integrations via the Primavera Gateway for a wide range of third-party tools

## → Reporting

Data analysis via Primavera Analytics and other tools



# Quick hit credibility

**Powerful reporting with all the standard reports straight out of the box**



**Fully configurable dashboards for at-a-glance visibility**



**Single source of the truth, via integration with the wider project controls platform**



**Enhanced visualisation and customisable reporting of Management Information**



# Unifier General Navigation

**Navigate top complete task list, requiring your actions and input**

**All outstanding tasks in one location**

**Open outstanding tasks directly from page**

**Select here to open a shell**

**View live statistics for tasks requiring your input and action**

**Include multiple dashboard tabs for better analysis and visibility**

**Users allocated to specific projects and contracts on a project and contract basis for enhanced security and access control**

**Project and contract landing pages are configurable**

**Simple and standard navigation across all functionalities available within the specific project and/or contract**

**Task Distribution**

Task Category	Count
DEMO - Reading Bypass	13
Reading Bypass - FIDIC	13
Warford Highway	13
Guideway Hospital	12
Edinburgh Bypass Construction	11
Bypass 3 Road Rehabilitation Scheme	11
HECC ECC Option A (Rothbar Test)	10
UT - TEST FIDIC Contract	8
UT - DEMO - Reading Bypass	8

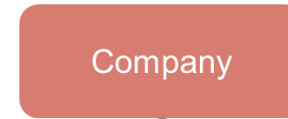
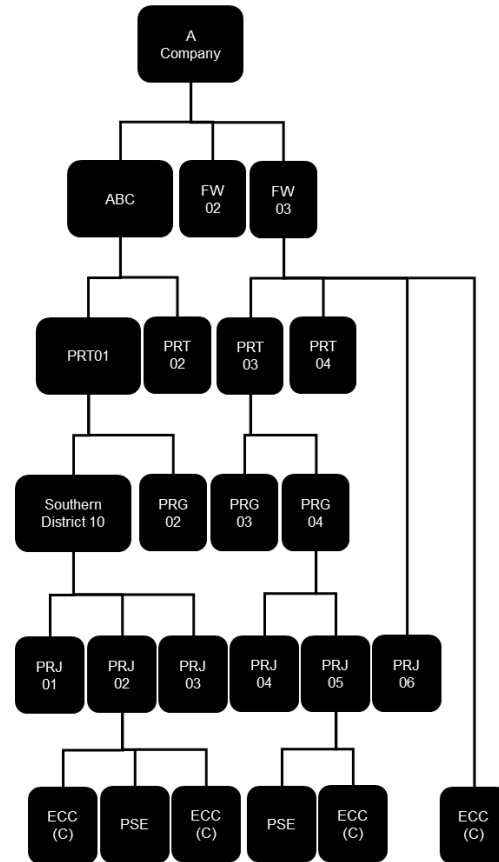
**Business Process**

Business Process	Late	Not Started	In Progress
DEMO - Reading Bypass	0	2	0
Detailed Claims	0	5	0
Detailed Proposals	0	1	0
Instruction and Variation	0	2	0
Programme	0	1	0
Submission	0	2	0
Value Engineering	0	1	0
Reading Bypass - FIDIC	0	2	0
Detailed Claims	0	3	0
Detailed Proposal Determinations	0	1	0
Detailed Proposals	0	0	0
Instruction and Variation	0	0	0
Notice of Defect	0	0	0
Programme	0	0	0
Value Engineering	0	0	0
Contracts	1	1	1
Change Directive	1	1	1
Change Request	1	1	1
Contracts	1	1	1

# Unifier Shell Structure

## The Unifier Shell Structure offers:

- A means to include fixed structural levels within Unifier
- Bottom-up and top-down data flow
- The option to configure to customer need
- Unifier does not control access and is not the P6 EPS



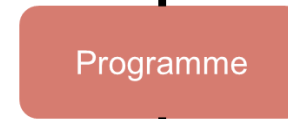
A single record to house the customer company, used to consolidate all project data into one structure node



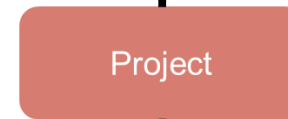
A multi record capability to house the specific business and operating units within a company used consolidate all project data into one node per business unit



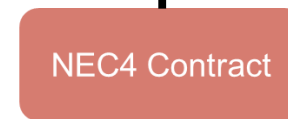
A multi record capability to house the Portfolios within a company used consolidate all project data into one node per portfolio



A multi record capability to house the Programme within a company used consolidate all project data into one node per programme

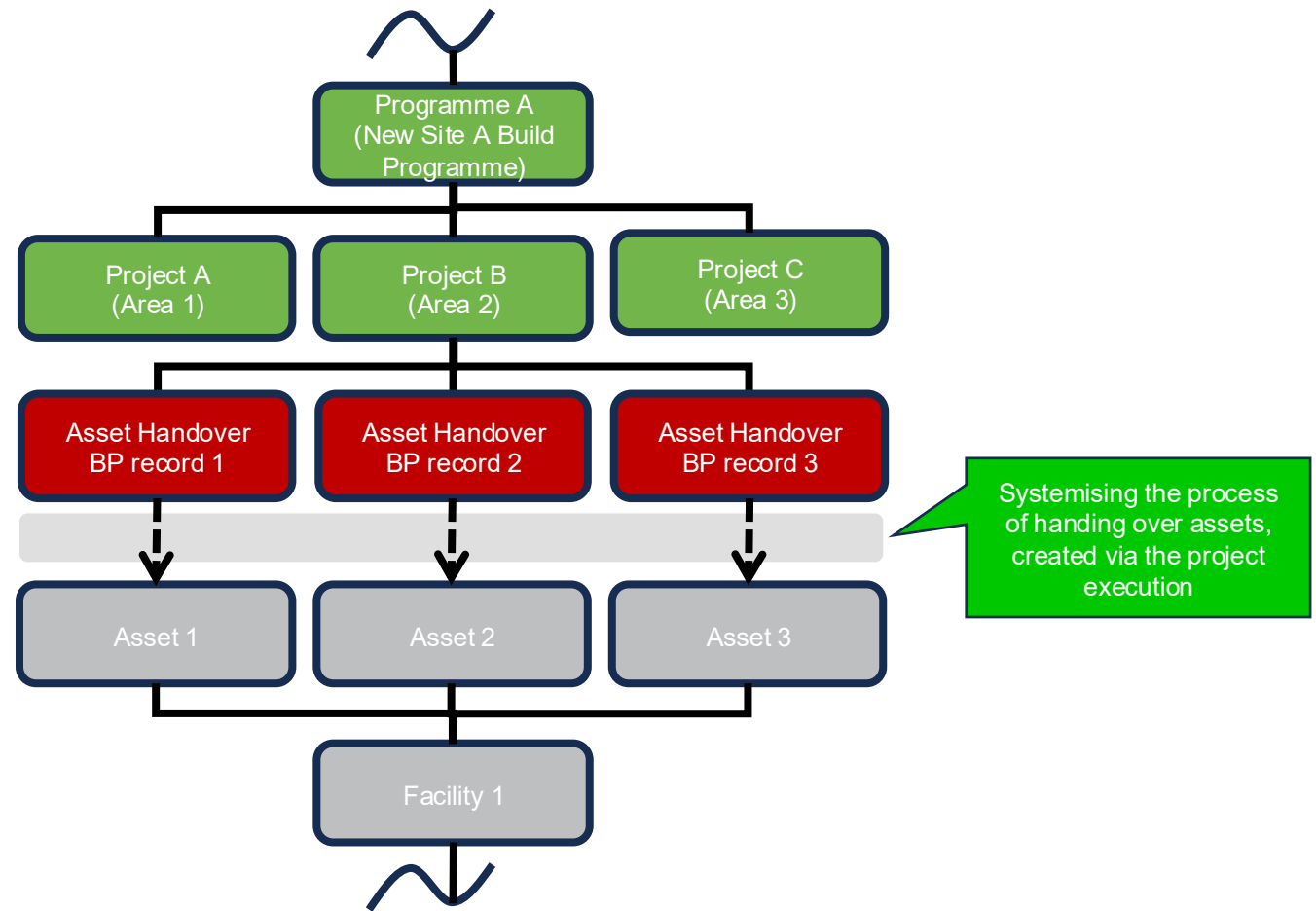
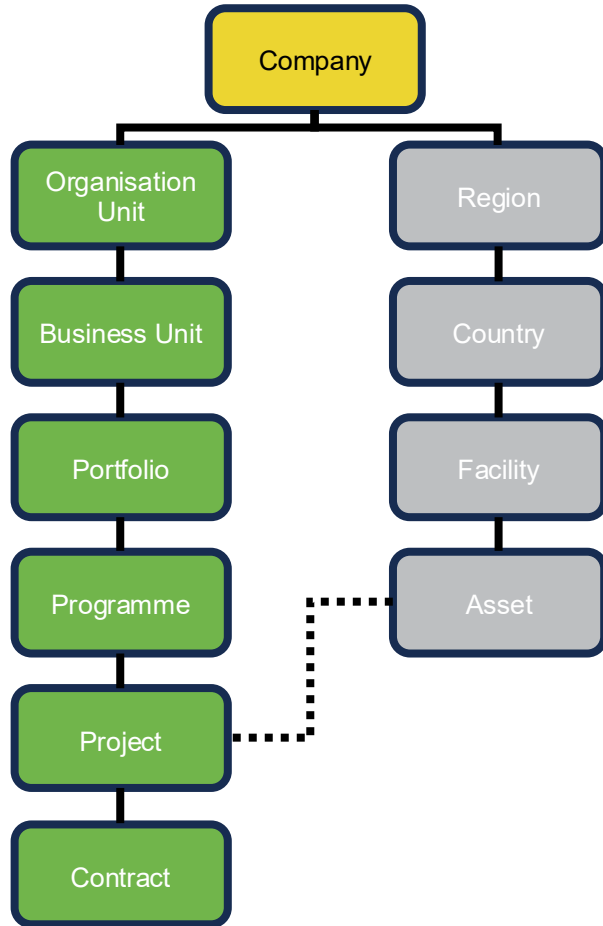


A multi record capability to house all Accelerator and EVM Lite capabilities being deployed including cost, earned value and risk management

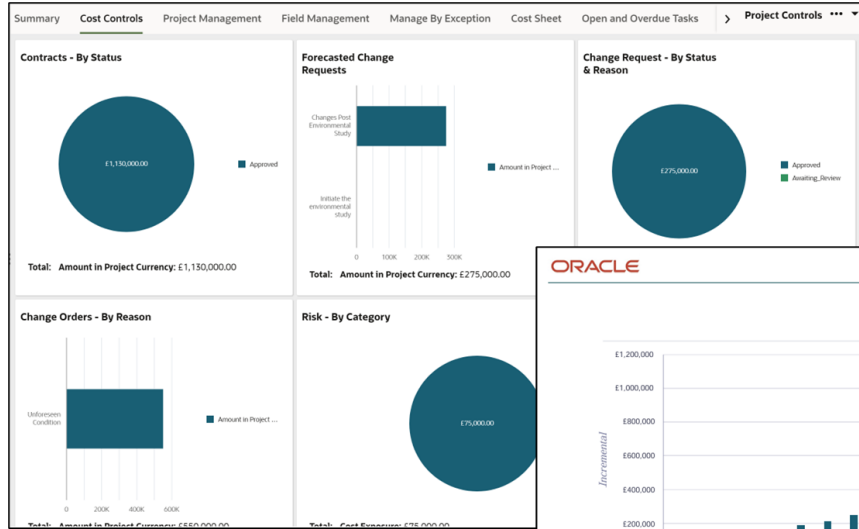


A multi record capability to house all NEC4 Contract capabilities being deployed

# Unifier Shell Structure

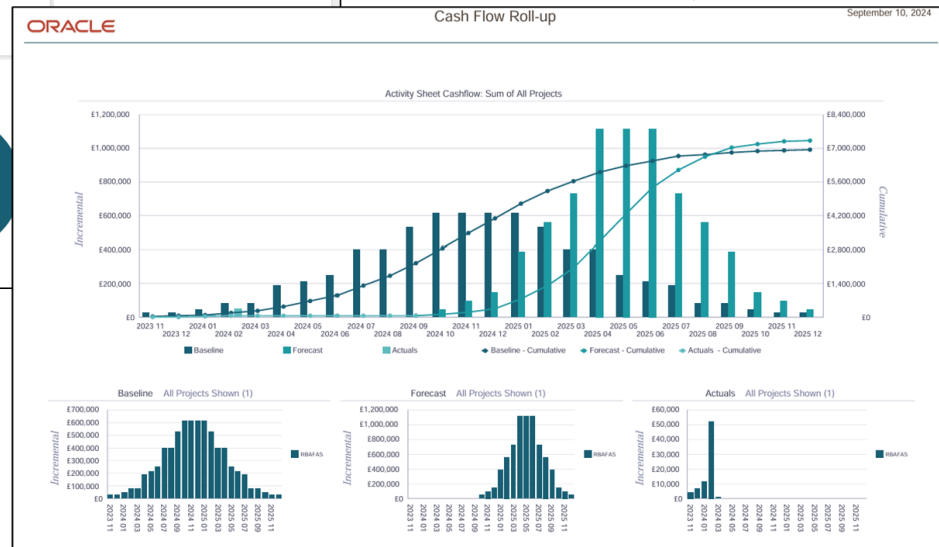


# Reporting and Analysis



Configurable dashboards, using out of the box functionalities

Reports available to be ran from within Unifier, leveraging Oracle Analytics Publisher

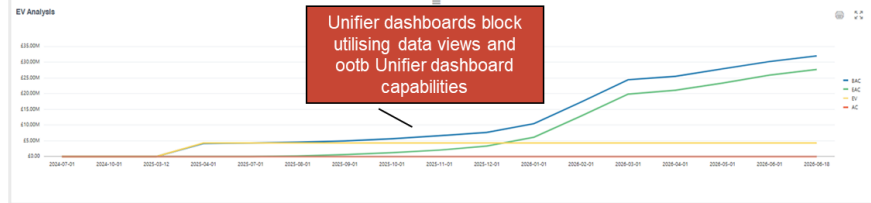


WBS SPREAD DASHBOARD					
PROJECT	Number: 100118	Name: 14-010-2024-EA	FINANCIAL PERIODS	Date Date: 01/07/2025	Period Start Date: 01/06/2025
				Period Finish Date: 30/06/2025	Run Date: 12/03/2025
	EP PMB	P51 PMB	OPEX PMB	TOTAL PMB	MR
ORIGINAL	£10,000,000	£22,500,000	£10,000,000	£42,500,000	£7,500,000
DELTA / CHANGE	£0	£0	£0	£0	£0
NEW / REVISED	£10,000,000	£22,500,000	£10,000,000	£42,500,000	£7,500,000
	£0	£0	£0	£0	£0
	£10,000,000	£22,500,000	£10,000,000	£42,500,000	£7,500,000

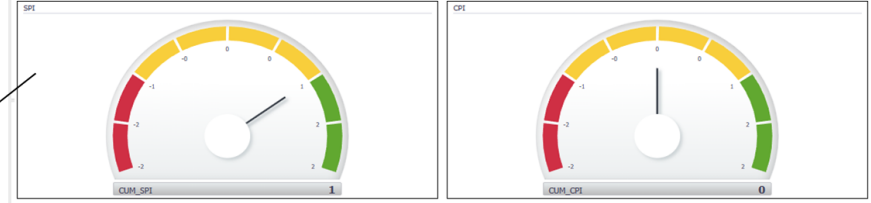
Unifier dashboard block utilising embedded interactive report via Oracle Analysis Service Publisher

	CURRENT PERIOD										CUMULATIVE TO DATE										AT COMPLETION			
	AC	BV	CV	SPR	CPI	EV	PV	CV	SPR	CPI	AC	BV	CV	SPR	CPI	BAC	ETC	VAC	TCPI/BAC					
WBS CODE	OP Cost	£0	£0	£0	£0	£4,332,000	£4,332,000	£0	£0	£4,332,000	£4,332,000	£0	£0	£4,332,000	£4,332,000	£0	£0	£1,991,956	£27,675,56	£27,675,56	£4,332,000	0.86		
High Technology Launch Space Engine CA	OP Cost	£4,332,000	£4,332,000	£0	£0	£4,332,000	£4,332,000	£0	£0	£4,332,000	£4,332,000	£0	£0	£4,332,000	£4,332,000	£0	£0	£10,961,114	£4,578,114	£4,578,114	£4,332,000	0.60		
Design WP	OP Cost	£0	£0	£0	£0	£0	£0	£0	£0	£0	£0	£0	£0	£0	£0	£0	£0	£1,562,360	£1,562,360	£1,562,360	£0	1.00		
Components WP	EP Cost	£4,332,000	£4,332,000	£0	£0	£4,332,000	£4,332,000	£0	£0	£4,332,000	£4,332,000	£0	£0	£4,332,000	£4,332,000	£0	£0	£6,951,330	£2,529,330	£2,529,330	£4,332,000	0.37		
Engine Block	EP Cost	£0	£0	£0	£0	£0	£0	£0	£0	£4,332,000	£4,332,000	£0	£0	£4,332,000	£4,332,000	£0	£0	£4,332,000	£0	£0	£4,332,000	0.00		
Cylinder Heads	EP Cost	£0	£0	£0	£0	£0	£0	£0	£0	£0	£0	£0	£0	£0	£0	£0	£0	£2,188,272	£2,188,272	£2,188,272	£0	1.00		
Engine Internals	EP Cost	£0	£0	£0	£0	£0	£0	£0	£0	£0	£0	£0	£0	£0	£0	£0	£0	£341,048	£341,048	£341,048	£0	1.00		

Unifier dashboards block utilising data views and out of Unifier dashboard capabilities



Unifier dashboard block utilising embedded interactive report via Oracle Analysis Service Publisher



# Reporting and Analysis

Enhanced Visualizations to accommodate more customisable MI, at shell level and within specific capabilities.

The screenshot displays the Oracle Primavera Unifier interface with several key components and callouts:

- Callout 1:** "Visualizations can be embedded into the Shell, or into specific capabilities" points to the left-hand navigation menu.
- Callout 2:** "Integrate KPI's along with charts and other tables" points to the top dashboard area containing KPI cards for RFI Count, Total Cost Impact, and Critical Comments.
- Callout 3:** "Use one of multiple predetermined layout options to tailor the Visualization" points to the "RFI Bubble chart".
- Callout 4:** "Select the Visualization(s) to be included" points to the "Library" panel on the right.

**RFI Bubble chart Data:**

Discipline	Avg of response time (Days)	Count of UESMT_COUNTER
Commercial	~0.1	~1.2
Architectural	~1.7	~4.0
Structural	~1.8	~1.8

**RFI Pivot Grid - Discipline Data:**

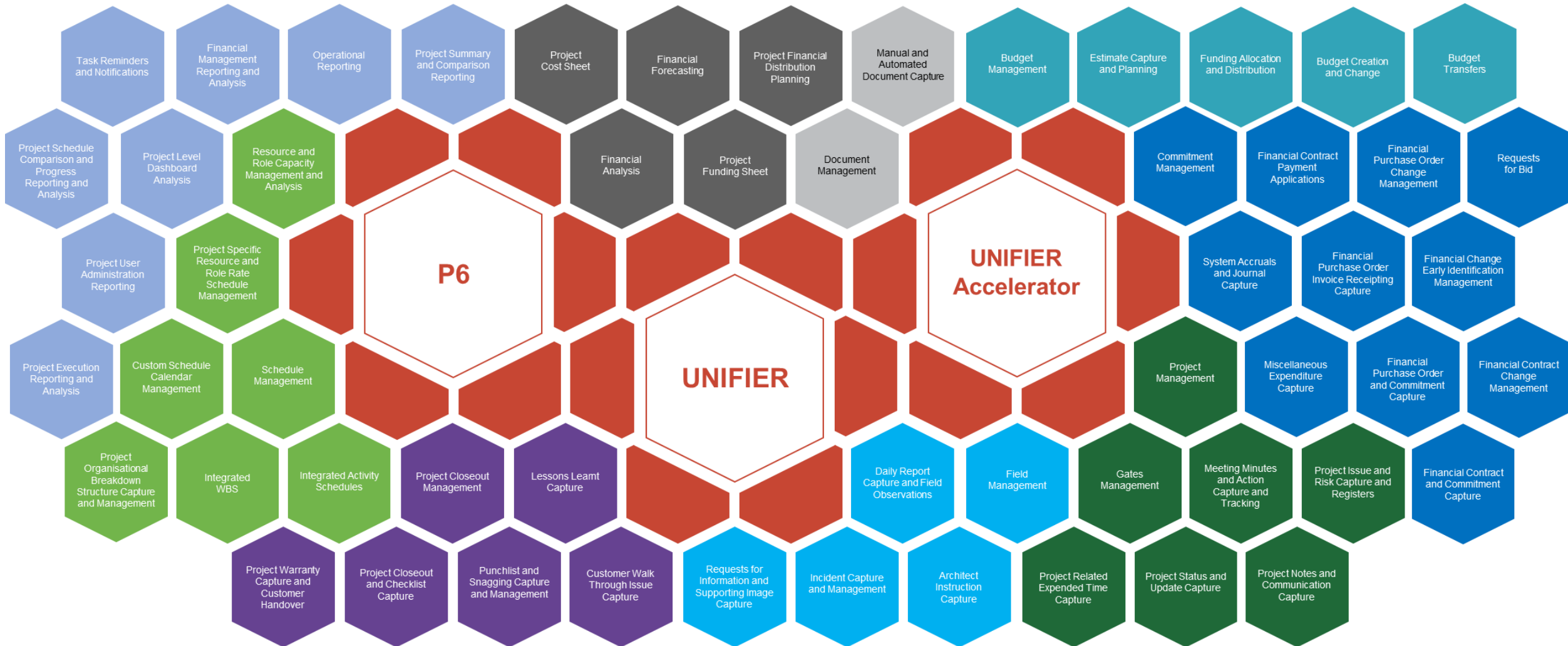
RFI Priority	Architectural	
	Low	High
Alternative Recomme...	0	0
Closed	0	0
Clarification	>	>

**RFI log Data:**

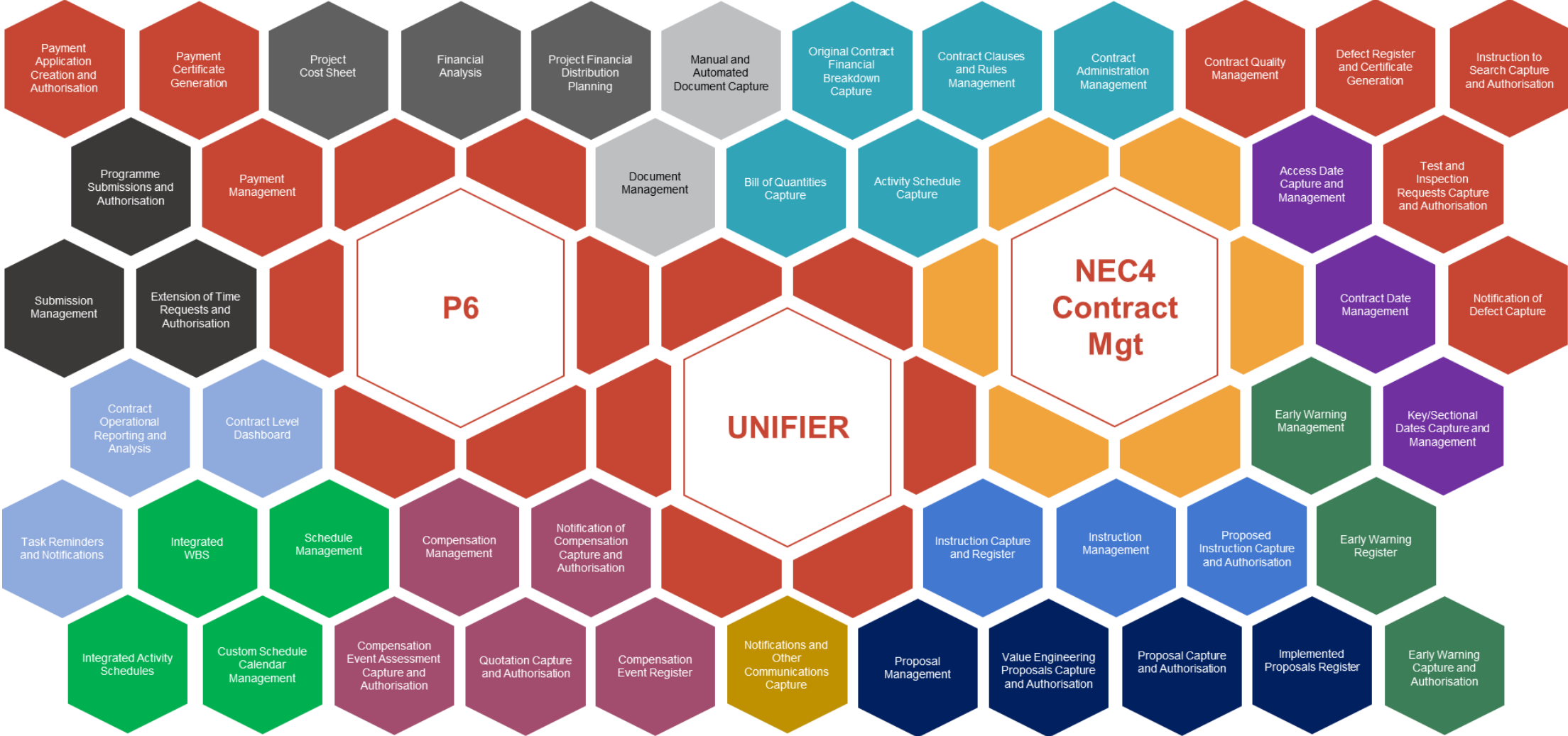
Reason	Count of RFI
Structural	2
Painting	2
Other Services	2
Mechanical/HVAC	2
Electrical	2
Commercial	2
Architectural	2
--	2

# Solution Overviews

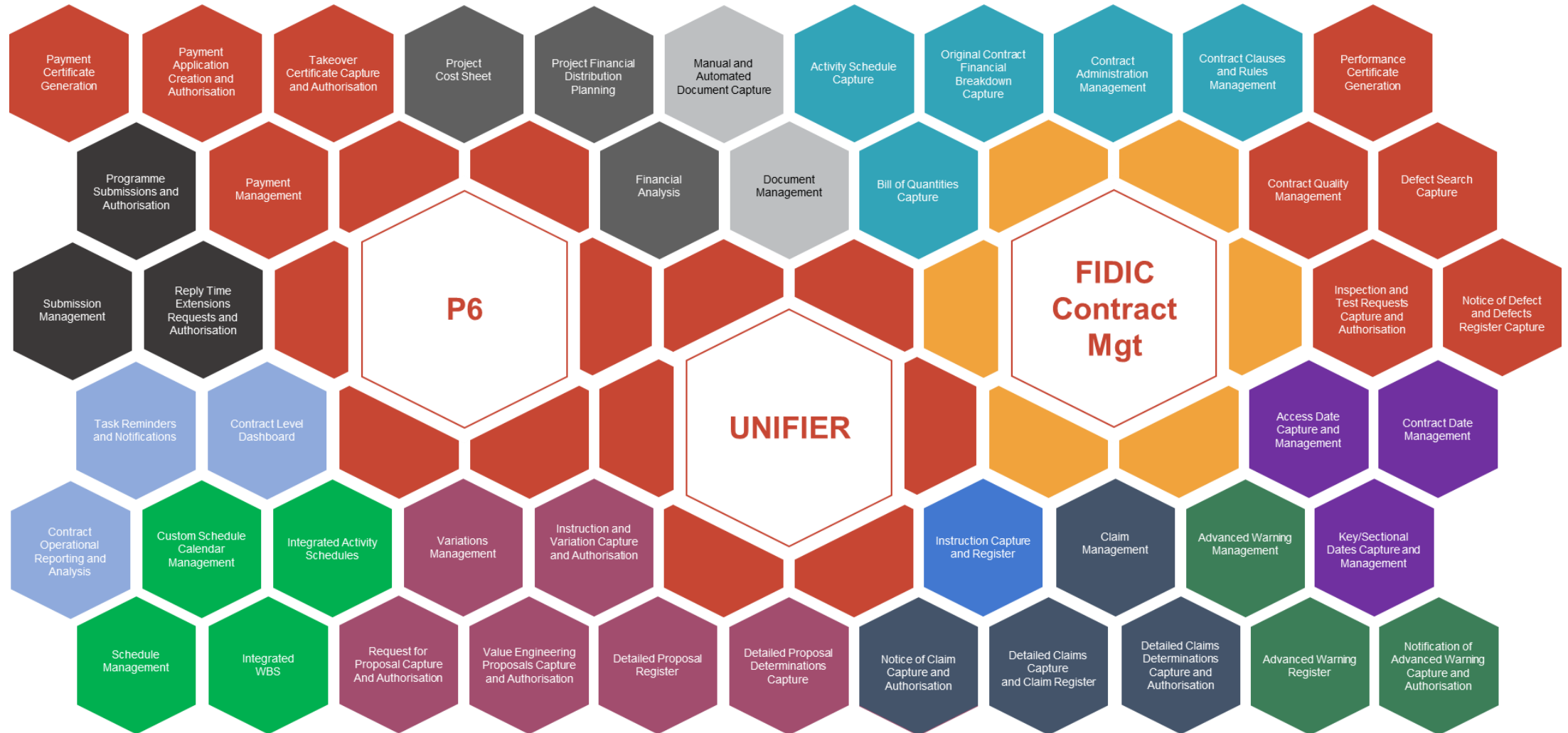
# Unifier Accelerator



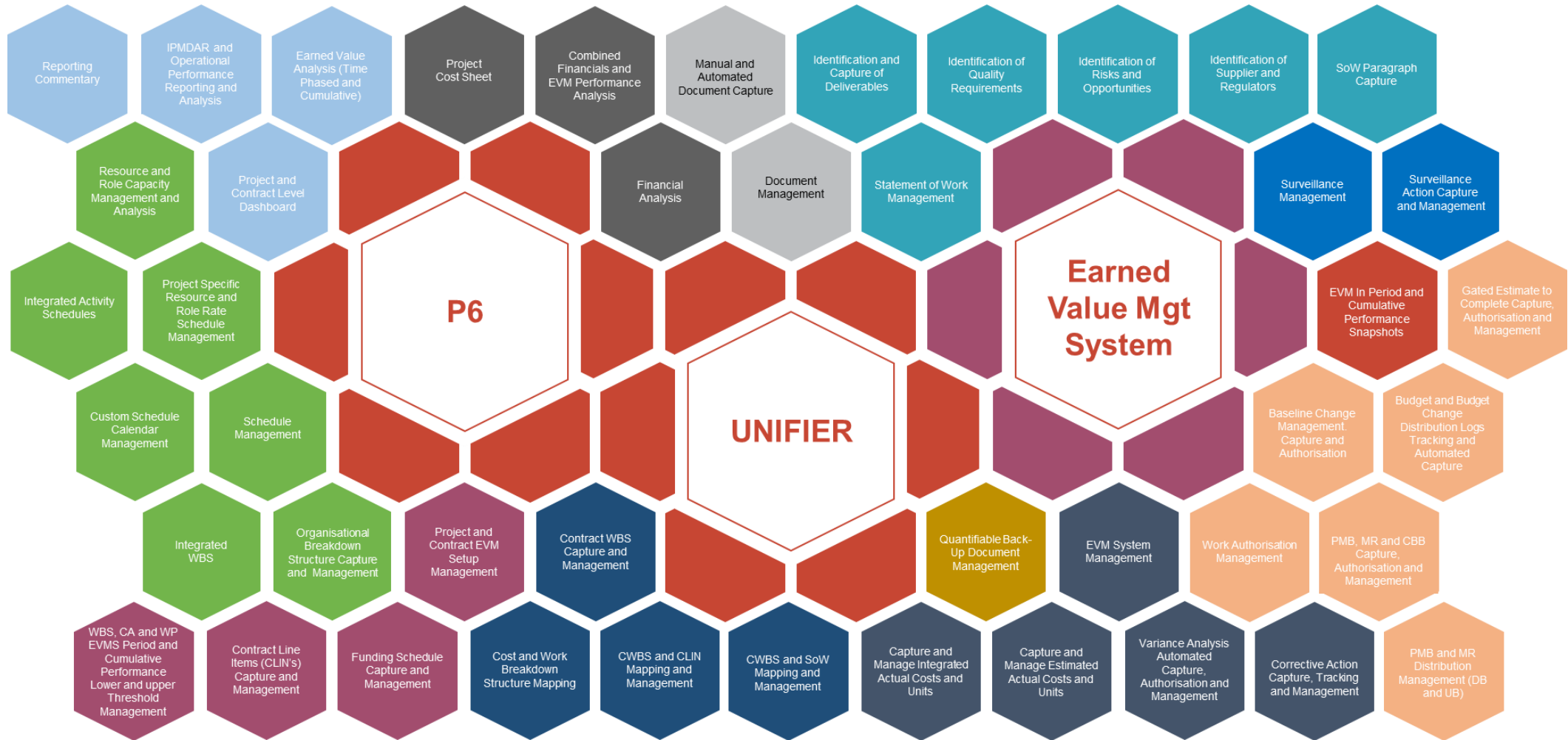
# Unifier NEC4 Contract Management



# RPC FIDIC Contract Management Solution



# RPC Earned Value Management Solution

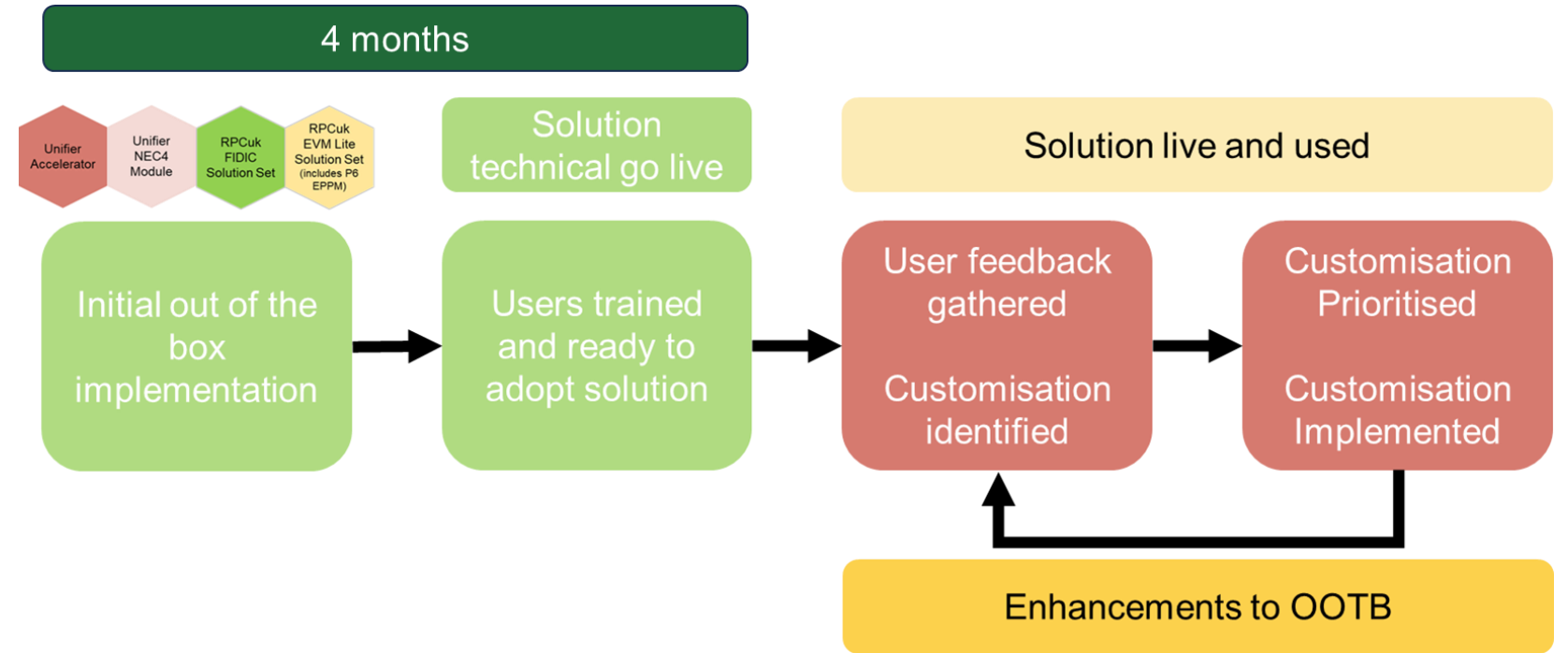


# RPC Qualitative Risk Management Solution



# RPC Unifier Solution Deployment Options

- Deployment of standard off the shelf capabilities, further enhanced with custom functionality post initial technical go live.
- Enables the user community to feed back enhancements during the system adoption.
- Faster ROI when compared to traditional or custom software development.



# Thank You

---

 **01943 222 001**

 **[enquiries@rpc.uk.com](mailto:enquiries@rpc.uk.com)**